

Composite Component

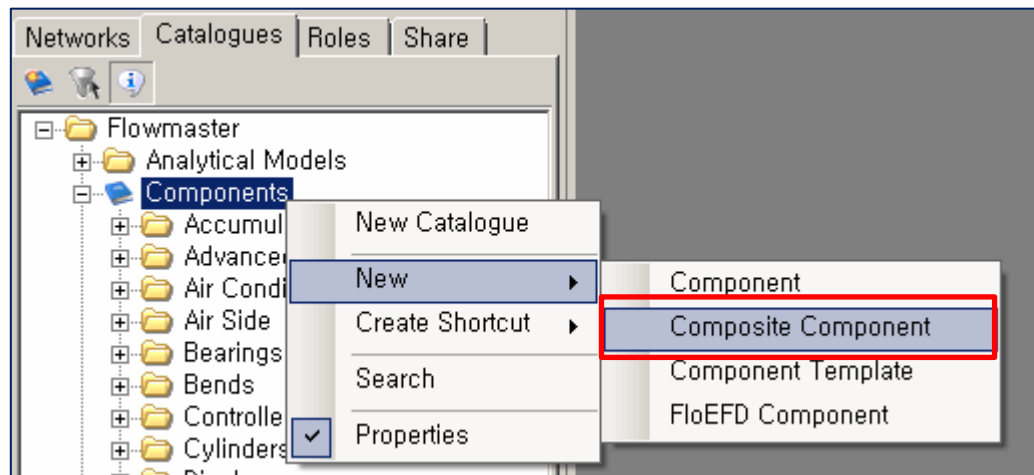


Flowmaster Korea

Fluid Flow & Thermal System Specialized

2013. Aug.

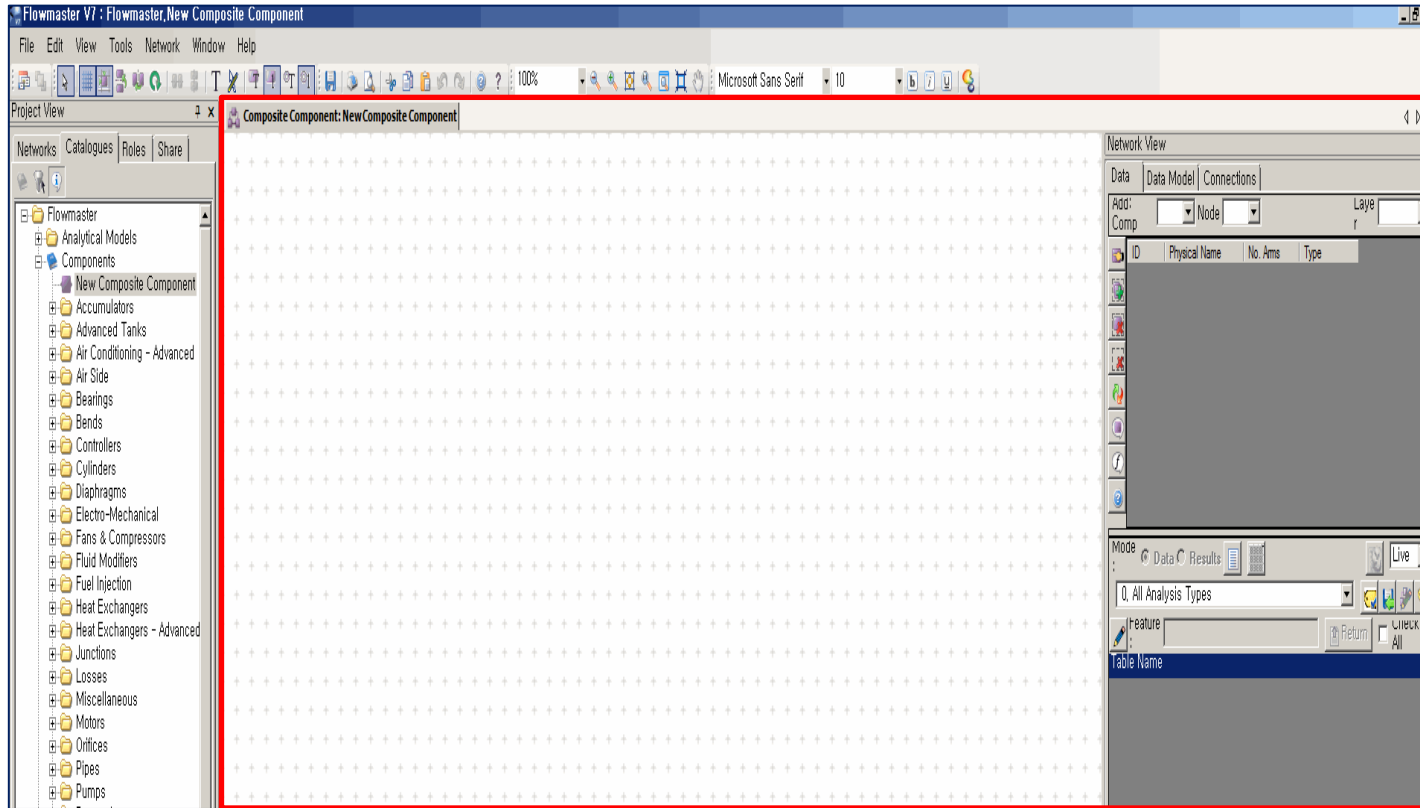
◆ Composite Component



■ 경로선택

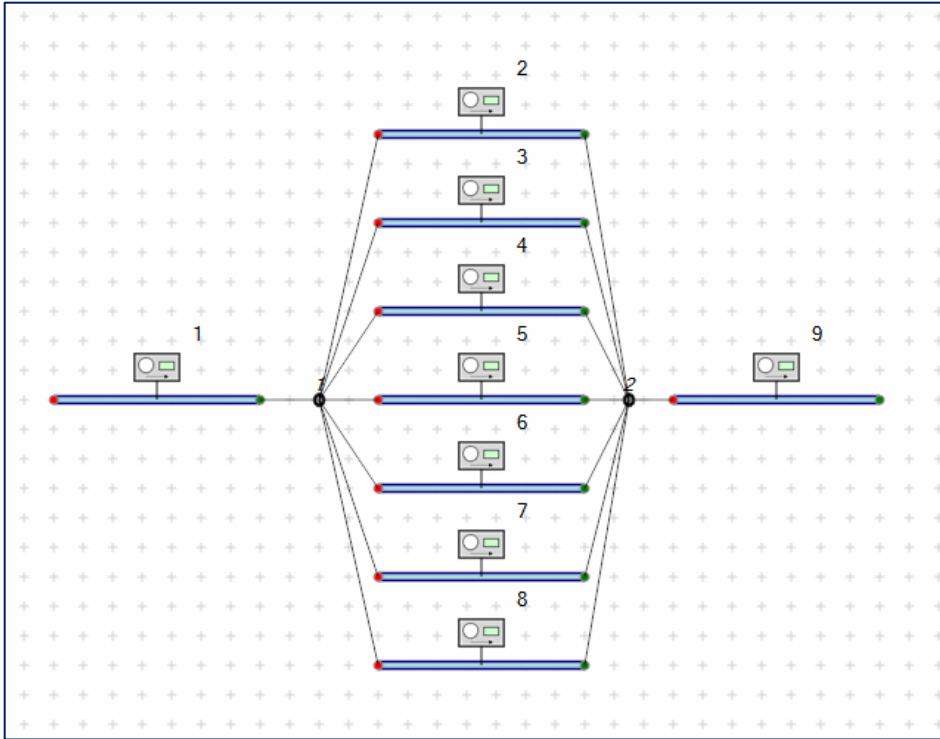
1. Catalogue Tap
2. Component
3. New
4. Composite Component Click

◆ Composite Component



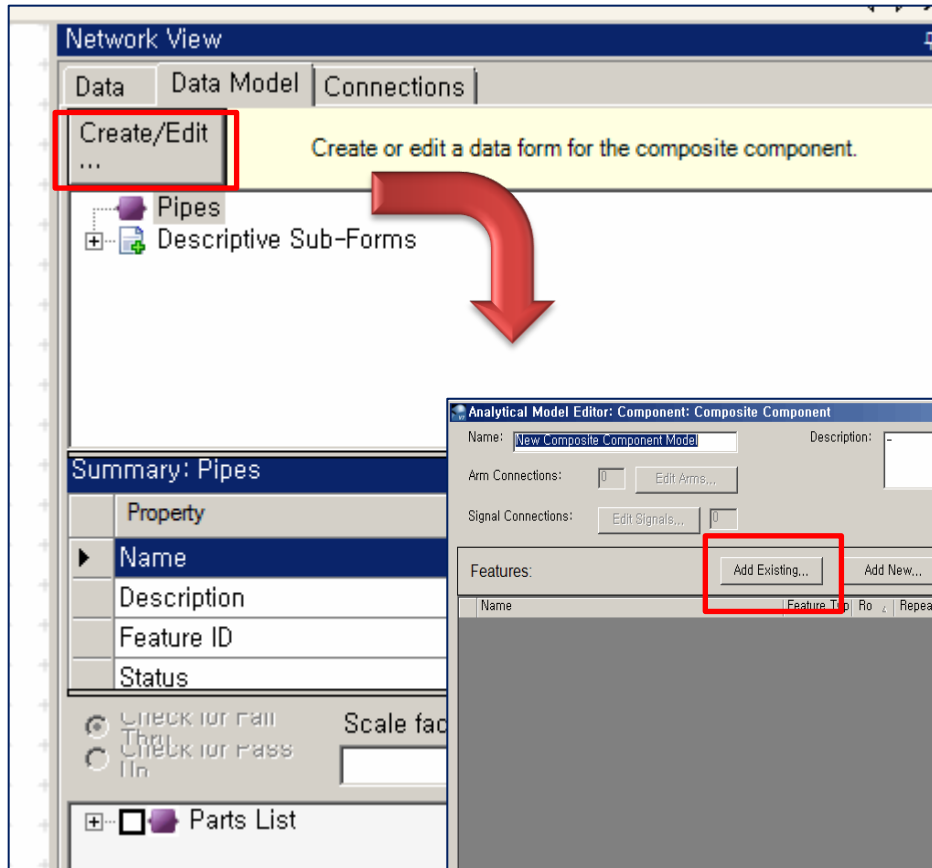
- Click 후 위와 같은 Composite Component 생성 network 창 생성

◆ Composite Component

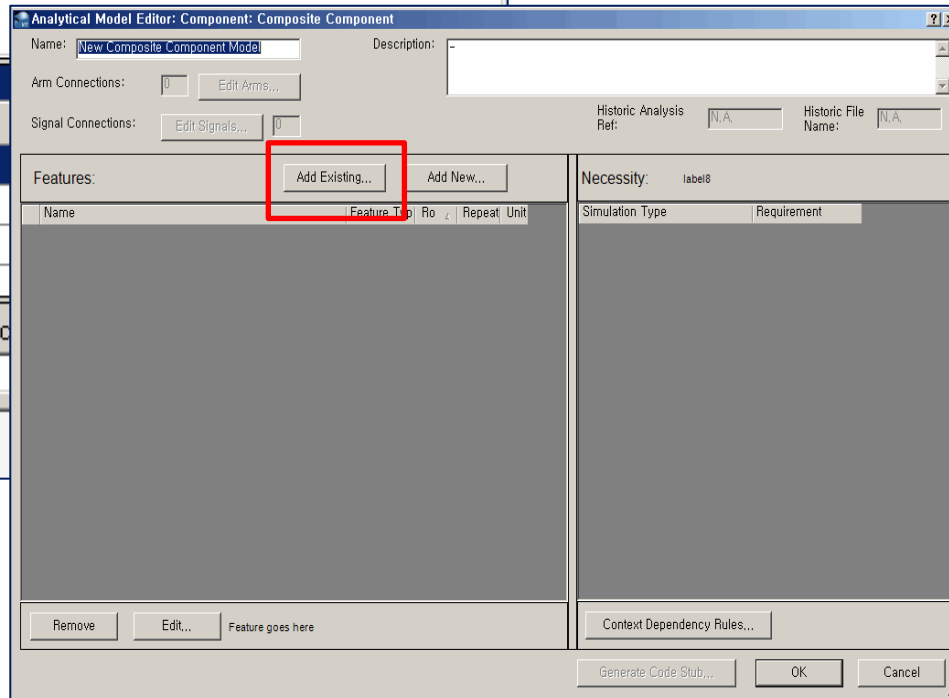


- Network 창에 위와 같이 network 구성
- 추후 구성된 network 가 하나의 component 로 표현됨.

◆ Composite Component



- network 구성 후 network view 창
 - Data Model Tab 에서 Create/Edit Click
 - 구성된 network 의 input 항목 선택을 위함
- Add Existing 선택하여 input 항목 설정



◆ Composite Component

The screenshot shows the 'Network View' window with the 'Data' tab selected. The 'Create/Edit' section contains the text 'Create or edit a data form for the composite component.' Below this, a tree view shows the 'Pipes' component with sub-items: Length, Diameter, Results On/Off, Volumetric Flow Rate, and Density. A red box highlights this tree view. Below the tree is a 'Summary: Pipes' table with the following data:

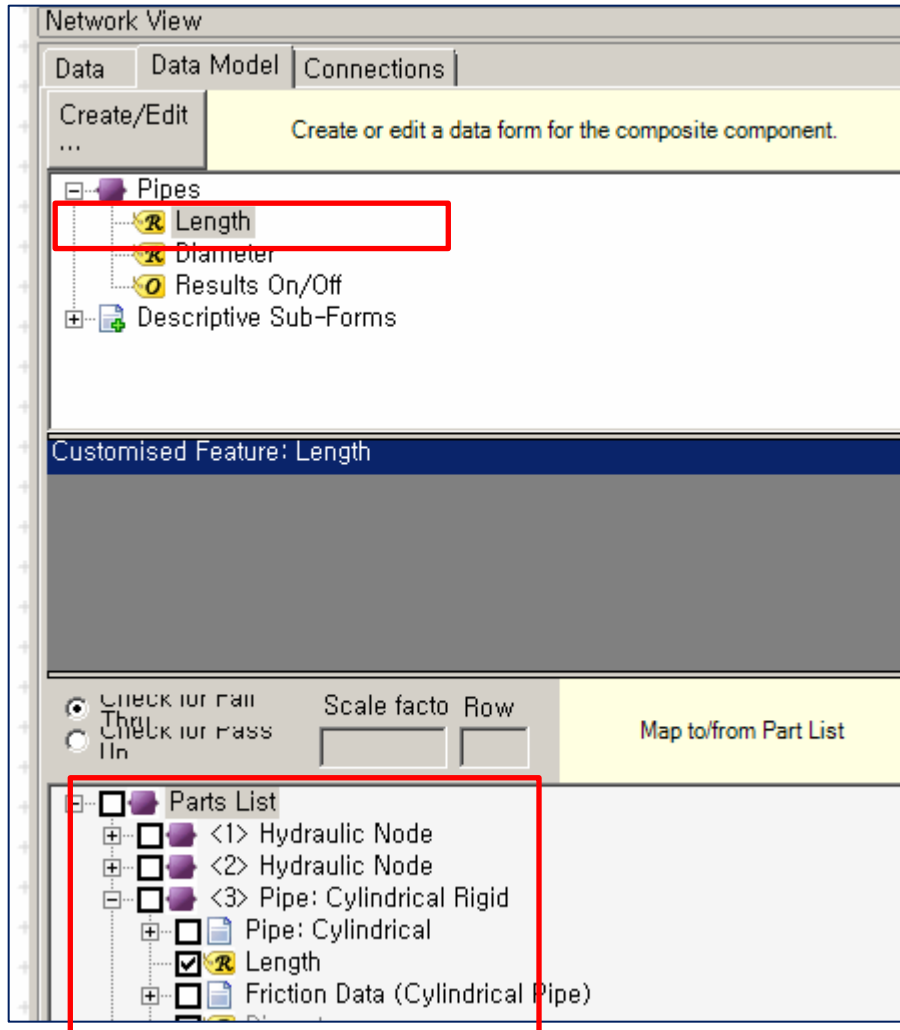
| Property | Value |
|-------------|------------------------------|
| Name | Pipes |
| Description | Not Set |
| Feature ID | 2a17b0dc-bb08-474c-a5c5-f... |
| Status | 3, Prototype |

Below the summary table are radio buttons for 'Check for Fail' and 'Check for Pass', a 'Scale factor' input field, a 'Row' input field, and a 'Map to/from Part List' button. At the bottom, another tree view shows the 'Parts List' with sub-items: <1> Hydraulic Node, <2> Hydraulic Node, <3> Pipe: Cylindrical Rigid, <2> Pipe: Cylindrical Rigid, <1> Pipe: Cylindrical Rigid, and <9> Pipe: Cylindrical Rigid. A red box highlights this tree view.

- Add existing 에서 input 항목 추가 된 모습
 - pipe 의 경우 length, diameter 등 선택
 - 좌측 상단에 노란 표시로 input 항목 확인 가능

- 현재 network 에 있는 component 목록

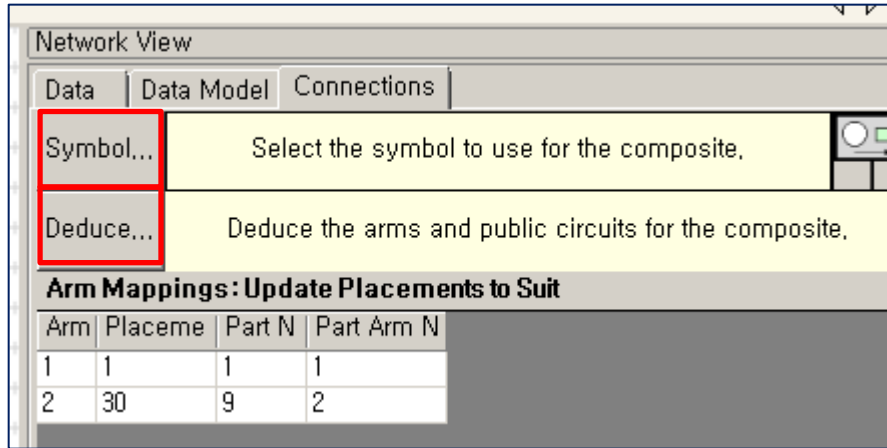
◆ Composite Component



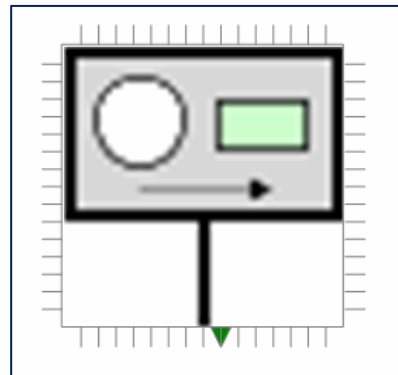
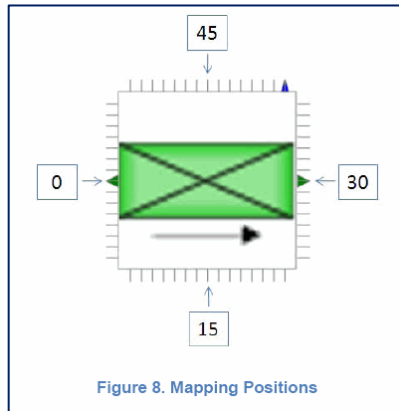
- Input 항목으로 length 를 선택

- Parts list 에서 pipe 선택 후 length 선택

◆ Composite Component

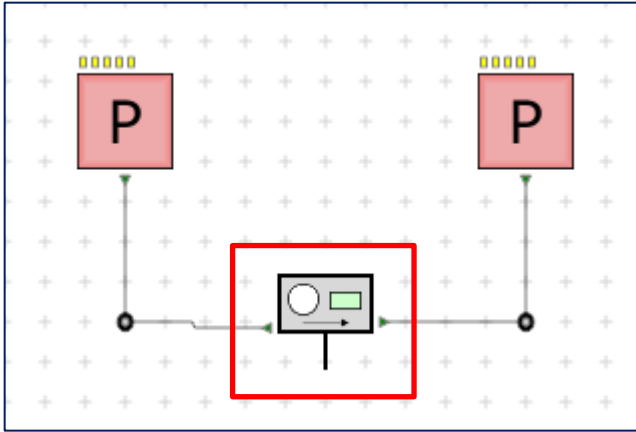


- Symbol
 - 생성된 composite component 의 이미지 선택
- Deduce
 - Composite component 의 Arm 수 및 위치 선택



- Mappings
 - placement 에서 Arm 위치를 설정 한다

◆ Composite Component



- 본 network 에 composite component 를 사용하여 구성된 화면